

Child Sexual Exploitation, Serious Violence & Knife Crime

What This Session is About

Serious Violence:

The specific crime types for West Yorkshire include **homicide, knife crime, violence against the person, personal robbery, gun crime, violence against women and girls, organised crime** (including county lines), **sexual exploitation and domestic abuse**.



Child Sexual Exploitation, Serious Violence & Knife Crime

Armley / New Wortley Community Workshop
Organised by: Meshebah CIC & West Yorkshire Police
Venue: New Wortley Community Centre

Date: Saturday, 06th Dec 2025
Time: 10:00 – 15:00



Rape and Sexual Abuse Support

0808 500 2222 or visit the 24/7 chat
online 247sexualabusesupport.org.uk

Priorities:

1. Keeping People Safe
2. Safer places & thriving communities
3. Supporting Victims & Witnesses

The top three areas of focus highlighted by the survey!

- Knife crime
- Anti-social behaviours
- Ensure that all victims benefit from their rights under the Victim's Code [MoJ Victims Code 2020](#)

Child Abuse / Child Sexual Exploitation

- Neighbourhoods' crime
- Make sure that **justice is accessible for the most vulnerable victims** and the most marginalised communities in West Yorkshire

Domestic abuse

- Road safety and driving behaviours
- Combating Drugs Partnerships: an introduction for Collective Voice providers

West Yorkshire Sexual Assault Referral Centre: Sexual Assault Referral Centre

0330 2233617



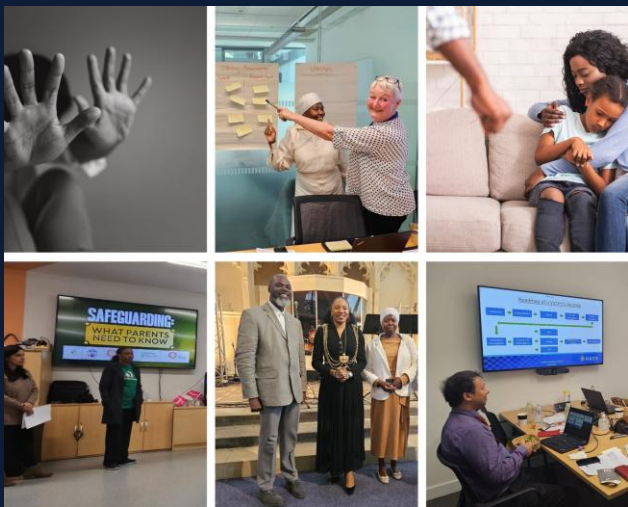
Safety of women and girls	Effective response to men and boys	Reducing vulnerability	Children and Young People Child First Framework	Equity, diversity and inclusion
<p>Victim Support and Engagement: embedding the voices of victim survivors and using this to drive improvements.</p> <p>Partnerships and Community: working in collaboration to prevent violence against women and girls, raise awareness and improve safety.</p> <p>Investigations and Risk Assessments – improving outcomes for victims.</p> <p>Violence against women: Resources for policing College of Policing</p> <p>National centre for violence against women and girls and public protection College of Policing</p>	<p>Embedding partnership working, including with male-specific and community-specific organisations.</p> <p>Make sure the different needs of men and boys are considered when looking at practices and procedures for rape, serious sexual offences and domestic abuse committed against them.</p>	<p>Child Sexual Abuse, Exploitation, and Neglect.</p> <p>Adults at Risk</p> <p>Adults at risk College of Policing</p> <p>Transitional Safeguarding & Child Criminal Exploitation. The risks adolescents face are often interconnected. They can include:</p> <ul style="list-style-type: none"> • sexual abuse • physical abuse • neglect • emotional abuse • homelessness • poor mental health and self-harm • criminal exploitation, including gang association <p>substance misuse.</p>	<p>Involve and demonstrate to children that you value them in as stakeholders</p> <p>(Voice and Influence Groups)</p> <p>Capture what is said during any discussions, but consider how to do this in a respectful way.</p> <p>Feedback to the children after the session</p> <p>After any engagement with children, you must communicate how their contributions have made a difference.</p>	<p>Celebrating the diversity of West Yorkshire and ensuring that the principles of equity and inclusion underpin all the work we do including working with the police to embed the Race Action Plan in West Yorkshire.</p> <p>All Districts should reference their completed “Communities of West Yorkshire” template to identify and include new diverse audiences.</p>



Child Sexual Abuse / Exploitation Serious Violence (e.g. knife crime)

To prevent the usage of communal areas within tower blocks for **antisocial behaviour** and **drug use**. We will conduct regular patrols within the tower blocks, to remove anyone found to be causing antisocial behaviour.

To combat the usage and **supply of drugs** in the **Little London** area, with particular attention being paid to **electric bikes** being used for **deliveries of drugs**. We will conduct high-visibility patrols of the area to deter offenders.





Key Partnership Contacts

- Meshebah CIC: info@meshebahcic.co.uk
- West Yorkshire Police Community Support Team: 999; 112; 101
- **West Yorkshire Sexual Assault Referral Centre: Sexual Assault Referral Centre - 0330 2233617**
- Crimestoppers (Anonymous Reporting): 0800 555 111